

JaZZ in the Gallery: The NFL Vocal Jazz Trio—*Singing with Swing* Friday, November 11, 8 p.m.

NFL (Nancy Nelson, Fred Fischer and Liz Fischer) is a close-harmony vocal jazz trio influenced by the great singing groups—the Boswell and Andrews Sisters, Lambert, Hendricks & Ross, and Manhattan Transfer—singing Fred Fischer's brilliant jazz and swing arrangements. The group's repertoire includes early jazz standards, big band hits, bebop and pop hits.



In addition to singing, Fred accompanies on piano, and his sister Liz plays great guitar.

NFL sings many of the arrangements Fred originally wrote for "The Glad Rags", a group that featured Fred, Liz, and Fred's

late wife, Patty, on banjo. That extremely popular group had a tremendous run of 12 years at Auntie Mame's in Stirling, starting in the late 1960's. About 15 years ago, freelance musicians Fred and Nancy met while playing in various big bands and small ensembles in the area. Nancy's singing gave Fred the idea of reforming a vocal trio to perform those original charts, as well

NFL Trio (continued on next page)

Contemporary Pop: Kemble and Ashe Friday, December 2, 8 p.m.



Grover Kemble

the Shondells while Kemble was cutting records with his group Za Zu Zaz.

They are both superb guitarists and singers, yet employ entirely different vocal skills. Kemble comes from the school of Ray Charles and croons and scats like a monster, while Ashe is a compellingly versatile vocalist in the genre of greats like Jim Croce and Van Morrison. Together they make beautiful music, harmonizing, riffing, and weaving their own brand of magic into every tune.

Grover Kemble and Jonathn Ashe are two of the most accomplished musician-friends the Garden State has produced. Both got their start in the 60's when Ashe played electric bass and toured extensively with Tommy James and

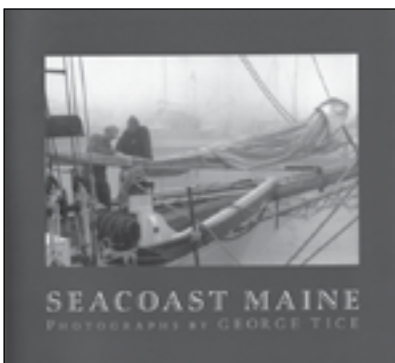


Jonathn Ashe

Kemble and Ashe (continued on page 3)

Art Lecture: George Tice, Professional Fine Art Photographer and Instructor Sunday, November 13, 1 – 4 p.m.

The New Jersey Photography Forum and the Watching Arts Center invite you to attend a lecture and presentation by George Tice, professional fine art photographer and instructor. Admission is eight dollars, open to the public and offers an opportunity to meet one of the best known fine art photographers in the nation as well as many of the fine art photographers in the audience who will be on exhibit at the Arts Center during the month of November.



George Tice is based here in New Jersey and has been making photographs for over 50 years. He has authored 16 amazing books on a wide variety of subject matter. He is best known for the work created in his native New Jersey and the impeccable quality of his black and white prints. His work is in permanent collections in many museums including the Museum of Modern Art, the Art Institute of Chicago and the Metropolitan Museum,

Art Lecture (continued on page 5)

The Improvables

Adult Improv: Saturday, November 19, 8 p.m.

Family Improv: Saturday, December 10, 8 p.m.



No two drink minimum—just a night of hysterical laughter and skits that will leave the audience feeling rejuvenated and ready to take on the cold and busy pace of the holidays. Join

the Improvables for an energetic night of comedy. Laugh loud and often as the troupe performs a series of skits from pre-written prompts or audience suggestions. Bring friends and enjoy the wacky world that imagination and improv can create. The Improvables have been the longest running comedy troupe at the Center and continually produce a unique evening filled with comedy games that will keep them on their toes and the audience doubled over from hysterical laughter.

Tickets are \$8.

NFL Trio (continued from previous page)

as an outlet for his constant creativity. Fred has since written dozens of new arrangements for the group. Initially, it all was just for fun, but the group quickly realized something very worthwhile was happening. Since Nancy and Fred regularly perform at the Watchung Arts Center with the Beacon Hill Jazz Band, they asked leader Marty Eigen if they might try a couple of the trio arrangements on a next gig. The audience response was tremendously enthusiastic, and soon the group was being asked to perform regularly. Since then, in addition to the Watchung Arts Center, the group has done shows for The Bickford Theatre in Morristown, the Fanwood Cultural Arts Center, Bernards Township Leisure Learning, Fellowship Village, Arbor Glen, the Plainfield Musical Club, plus a special show in Newport, RI, in June of 2011 that received an overwhelming ovation from the audience.

Tickets are \$16 advance sale, \$20 (members \$18, students \$10) at the door.



This program is made possible, in part, by funds from the New Jersey State Council on the Arts/Department of State, a Partner



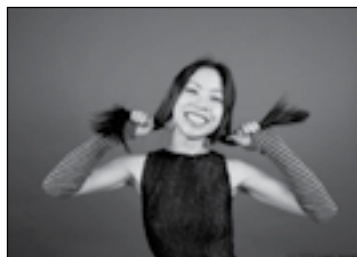
Agency of the National Endowment for the Arts, and administered by the Somerset County Cultural & Heritage Commission through the State/County Partnership Local Arts Program.

Classicals at the Circle: Stephen Fang and Jeanette Fang

Sunday, November 20, 4 p.m.

New Jersey natives Stephen and Jeannette Fang present an evening of stalwart favorites of Chopin, Bartok, and Brahms. The Chopin Preludes present a vast landscape of color and imagination, while the Bartok Sonata is a compressed tour de force of vigor. The charismatic duo will then reunite for a rousing finale of the ebullient Brahms F Major cello sonata.

Pianist **Jeannette Fang** has just completed her Artists Diploma degree at the Yale School of Music under the guidance of Professor Peter Frankl, where she also received her master's of music. She received her bachelors from the Juilliard School through the J. and R. Lhevinne and John and Eva Post Scholarships. Her previous teachers have been Yoheved Kaplinsky, Robert McDonald, and Julian Martin. Jeannette has been a featured soloist with the Battleground Symphony and the New Jersey Philharmonic, and has performed at Alice Tully Hall, Bargemusic, Peter Jay Sharp Theater, Weill Recital Hall, Steinway Hall, and the John F. Kennedy Center in Washington D.C. Jeannette has a great interest in new music, and has worked with composers like David Lang, Shulamit Ran, Aaron Jay Kernis, and Stephan Cox.



Assistant Principal of the Akron Symphony Orchestra. Stephen studied with preeminent professors and principal cellists of major orchestras, including Carter Brey, Richard Aaron, Desmond Hoebig, Stephen Geber, and Eric Kim. He earned his Bachelor and Graduate Degrees at the Cleveland Institute of Music where he was the winner of the 2003 Ellis A. Feiman Memorial Award for Achievement in Cello and the 2003 Dr. Bennett Levine Memorial Award for Achievement in Chamber Music.

Tickets are \$16 advance sale, \$20 (members \$18, students \$10) at the door.

Classicals at the Circle: Rising Stars Benefit for WAC

Sunday, December 11, 4 p.m.

A very special event, a must for families with young aspiring Musicians! A kaleidoscope of incredibly talented youngsters age 5 to 15 showcase their respective instruments, from piano to guitar to violin. Each of them won tough competitions in their category, some already boost Carnegie Hall credentials!

Join us in this Fundraiser for WAC, hosted by its 'Classicals at the Circle' Series in the intimate Upper Gallery on a Sunday afternoon.

General admission tickets are \$12 (students \$10).

Kemble and Ashe (continued from page 1)

Look to be entertained—these two local giants have a sense of humor nearly equal to their uniquely appealing talents.

Tickets are \$18 advance sale, \$22 (members \$20, students \$10) at the door.

Watchung Arts Center Announces its Green Initiative

The Board of Trustees and staff at the Watchung Arts Center are excited to announce the next step in the Center's Green Initiative—a plan designed to reduce the Center's carbon footprint and be an ecologically responsible organization.

The Center has already reduced the number of flyers and promotional materials it sends out to its patrons and members. The Center has been utilizing online blogging, Twitter, FaceBook, weekly Email Blasts, and other social media outlets to inform Members and Patrons of the ongoing events.

The November – December *Arts News* is the last issue being mailed to members. All information will be able to be found online and updated live as programs are added or changed. Visit www.WatchungArts.org often to keep current on the latest offerings. You may also sign up for the email blasts on the website's home page. For those members that do not have access to a computer, you may request in writing or by phone and we can send printed materials to you on a regular basis.

JaZZ in the Gallery Holiday Jazz: Marty Eigen's Beacon Hill Jazz Band

Friday, December 16, 8 p.m.

Once again it's holiday party time again and what better way to have a party than with Marty Eigen's Beacon Hill Jazz Band. The band will be returning on Friday, December 16th with what has become a holiday tradition at the Watchung Arts Center. This is the eighth year that the band will play for us on the holiday, to what has also become a tradition of sellout crowds. Marty Eigen will lead the festivities with all the excitement you have come to expect from this world-class group.



As usual, there will be some exciting surprises in store—and, of course, the energetic "Meet-the-Musicians" Party at the end.

The band members for this performance will be: **Marty Eigen** — tenor sax, clarinet & leader; **Bill Ash** — trumpet & flugelhorn; **Chris Cottier** — baritone sax & clarinet; **Doug Wintz** — trombone; **Fred Fischer** — piano & vocalist; **Bob Funesti** — bass; **Flip Peters** — guitar & vocalist; and **Mike Walter** — drums.

Take a break from your holiday chores and come relax with us for a toe tapping holiday interlude!

Tickets are \$16 advance sale, \$20 (members \$18, students \$10) at the door.



Happy Holidays!

The Watchung Arts Center will close during Thanksgiving, and Christmas through New Year's. Please check our website, www.WatchungArts.org, for gallery hours as well as current events and happenings.

The Board of Trustees and staff of the Watchung Arts Center would like to wish patrons and members a healthy and happy holiday season!

Wednesday, November 2 – Saturday, November 26. Artist Reception Sunday, November 6, 1 - 4 p.m.

Upper Gallery: New Jersey Photography Forum — 17th Annual Juried Photography Exhibit

Photographers are invited to submit photographs to be considered for exhibition at the 17th Annual Juried Photography Exhibit of the New Jersey Photography Forum. The exhibit is open to any photographer able to hand deliver their work to the Watchung Arts Center on the Watchung Circle in Watchung, NJ on Saturday, October 29th, between 1 and 4 p.m. The cost is \$20 for every two photographs entered. There is no limit to the number of entries. The public is invited to attend the opening reception on Sunday, November 6th, from 1 to 4 p.m., at which time awards will be presented and everyone will have an opportunity to meet the artists.



Porch, Monhegan Island, ME, 1971
George Tice

The exhibit and events will be curated by Nancy J. Ori of Berkeley Heights and will include a lecture by New Jersey's premier photographer, George Tice on Sunday, November 13 (see article on page 1).

The three judges will be Meredith Lippman, Lawrence Cappiello, and Ron Wyatt. Meredith is Co-Curator for Brennan Gallery in Jersey City, freelance curator, and Program Development Specialist for the Hudson County Office of Cultural & Heritage Affairs/Tourism

Development. Lawrence is an Artist, Curator, and Founder/ Executive Director of the Arts Guild of New Jersey in Rahway. Ron Wyatt is a Commercial, Editorial and Sports Photographer, Kodak photographer at the 2004 Athens and 2008 at the Olympics, and Instructor with M&M Photo Tours.

The New Jersey Photography Forum, directed by Nancy Ori, is dedicated to furthering the interests of professional and serious photographers. The group is now in its 17th year of development and has become the largest and most recognized group of fine art photographers in New Jersey.

Lower Gallery: Yeon Ji Yoo Park — *In the Darkness* (2011)

The core of the body of Yeon Ji Yoo's work is always about the impending transfer of nutrients, memories and histories, and life's acquisitions from one being to another in the moment of death. As one life comes to an end, where the nutriment acquisition has occurred, new life is beginning.

In the Darkness is a body of works including drawings and sculptures in which Yeon Ji investigates the transitory and eerie world of decay and a transformation of organic matter of which the artist has manifest as nurse logs that are each unique microcosms. Each of these mixed media compositions are almost-on-the-verge identifiable, readable forms which are both grotesque and magnifies the beauty of a natural world. Visit www.yeonjiyoo.com for more information.



In the Darkness 6

New Gallery And Office Hours

Beginning November 1, 2011, the new office and gallery hours are:

Sunday, Monday and Tuesday: closed

Wednesday: by appointment only

Thursday and Friday: noon – 3 p.m.

Saturday: by appointment only

The Center's staff will be available by phone and email to answer any questions, handle reservations and to ensure that you have the most wonderful and artful experience in our facilities.

Gallery hours: Thursday and Friday: noon to 3 p.m.; Wednesday and Saturday by appointment only.

Upper and Lower Galleries: Sunday, December 4 – Thursday, December 22. Artist Reception Sunday, December 4, 1 - 4 p.m.

Studio: Sunday, December 4 – Friday, January 7. Artist Reception Sunday, December 4, 12 - 1 p.m.

A Call to WAC Artist Members

Upper Gallery: Curator Ludmila Kalivoda — 2011 Members Juried Art Show

Studio: Curator Monica Schraiber Otero — 20th Children's Juried Art Show

Ushering in the warmth and spirit of the holiday season, WAC announces the Call to Artist Members for the Annual Members Juried Art Show. WAC Members are invited to display their artwork in the Upper Gallery as part of a long-standing and well-received tradition. As a juried Art Exhibition, the 1st place winner will be awarded a solo show in the Lower Gallery during the next year.

Past seasons' winners brought a wonderful variety of art to grace the walls of the Center and showcased the strong eclectic mix and exceptional talents of our members.

In addition, the WAC Studio will host the 20th Annual Children's Juried Art Show during the month of December for students ages 4 – 17. The goal of this exhibition is to recognize budding talents, creative potential and to encourage artistic development in children by providing an opportunity for the display and appreciation of their work outside home and school. The WAC therefore, hopes to encourage the support of instructors, schools, and parents in our communities to promote student's participation in this exciting event. This is a unique opportunity for family members to exhibit their work at the same time! The Art Reception for the Children's Show will take place in the Studio prior to the Members Show and will feature awards and light refreshments.

Art Lecture (continued from page 1)

where he had a one-man show in 1972. The Afterimage Gallery has handled his work over 30 years. His photographs have been shown all over the world.

Beginning at 1 p.m. with a slide lecture featuring images from his book *Seacoast Maine*, Mr. Tice will conclude with a book signing and sale (cash or check only, no credit cards) A portion of the proceeds going to the Watchung Arts Center.

There will be an opportunity for guests to view some of his darkroom prints that will also be on display as well as the exhibit in the main gallery of the Arts Center curated by Nancy Ori which features the New Jersey Photography Forum Annual Juried Exhibit.

Lower Gallery: Winner of the 2010 Members Juried Art Show, Maryann Ficker — *Personal Realities*

These portraits and figure paintings are an exploration of the realm of personal reality. A conversation between the artist and her subject takes place on the canvas. Who are they? Where are they along life's path? What are their dreams, attachments, aversions and amusements? Universal forces have conspired to bring them to this moment in time. What archetypal forms are expressing themselves? The paintings explore the joyful, as well as the shadow side, the impetus for growth and attachments to the natural world.



Alex

The resulting narratives engage the viewer in another conversation, another exploration of personal reality.

GIVE THE GIFT OF ART!

Purchase a membership for a friend, loved one, or family member and give the gift of art. The Watchung Arts Center, a non-profit multi-disciplinary arts facility has a wonderful variety of art programs, music performances, and art exhibitions for all to enjoy. The facility boasts a creative and inspirational atmosphere where one can peruse the galleries, listen to master musicians, or take one of the many educational offerings. All gift recipients will receive discounts to a variety of programs, and a letter acknowledging your gift. Keep the arts alive and send a membership today!

Fill out and mail in the form on page 7, or you may do it online at the Support page of our website, www.WatchungArts.org/Support.htm.

Children's Art Enrichment Program

Thursdays: Drawing Enrichment Workshop

Young artists develop natural ability, improve skills and explore new techniques as they learn the fundamentals of drawing. Students will use dry and wet media such as pencil, charcoal, oil or chalk pastels, India ink and watercolors as they discover how to sketch, shade and use perspective. Projects will include still lifes, portraits, landscapes in natural settings (weather permitting), optical illusions, abstracts and more!

Thursdays, 4:30 - 6 p.m.: January 12, 19, 26; February 2, 9, 23; March 1, 8, 15, 22. The spring session will be a shortened eight-week program held on Tuesdays, from April 17 to June 5.



Tuesdays: Painting Enrichment Workshop

Students create realistic pieces or let their imaginations go as they learn how to use non-toxic acrylics on canvas boards. Young artists will produce colorful works as they learn the basics of traditional technique of painting, composition and the color wheel. See what made Cezanne, Matisse and Picasso famous!

Tuesdays, 4:30 - 6 p.m.: January 10, 17, 24, 31; February 7, 21, 28; March 6, 13, 20. The spring session will be a shortened eight-week program held on Thursdays, from April 12 to May 31.

Fees: \$140.00 + \$15.00 supply fee (WAC members \$135.00 +15.00 supply fee) for the fall and winter sessions. The fee for the spring cycle is \$105 (WAC members \$100) + \$15 supply fee. Sibling discount of \$10 after first sibling paid in full. Multiple season discounts: Sign up for fall and winter sessions for \$285 (a savings of \$25) or fall, winter and spring sessions for \$390 (a savings of \$40). Please bring a small snack and drink to class.

Download the flyer/registration form from our website at www.WatchungArts.org/Classes.htm.

Monica Schraiber Otero has taught Art at elementary and high school levels since 1991. She received her BA in Art from Rutgers University, Newark College of Arts and Sciences with a concentration in oil painting. She teaches Drawing and Painting classes at WAC, is the Director of the Summer Art Camp, and curates the Children's Juried Art Exhibition each year. She is a professional artist who shows her work in many venues throughout NJ. She is a member of AENJ (Art Educators of NJ) and the Contemporary Art Group.

Yoga

Yoga classes are in full 'stretch'! The Fall Term will conclude on December 17. Special holiday classes are being offered on **Tuesdays, December 20 and 27:** level I & II at 6 p.m. and II & III at 7:30 p.m. The Winter Term will start in early January. Please see www.WatchungArts.org.

A thoughtful and joyous holiday!

Adult Workshops

Caramel Apple Creations

November 19, 11 a.m. - 12:30 p.m.

Love apples, creativity, and Fall? Then this is for you! Design your very own delicious Thanksgiving treats by dipping fresh, juicy apples into caramel and festooning them with customizable chocolate and candy. Learn techniques that you can use at home to make these desserts whenever you like (great for holiday presents!). Each participant will choose 3 apples to decorate while enjoying fresh-popped popcorn and tasty seasonal cider. Lots of yummy fun for the whole family! Open to participants ages 7 and up.

Price: materials - \$7. Course Fee: \$18 adults, \$13 children.

Instructors: Mary Morningstar Collins, Melissa Leigh Ellis

Garland of Gratitude

November 19, 1:30 p.m. - 3 p.m.

Begin a tradition of thankfulness in your home with the Garland of Gratitude! In this workshop we'll string garlands of autumn-hued paper leaves on twine and discuss the "how-to's" of garland construction and personalization. Each leaf offers an opportunity to invite your family and holiday guests to record a thankful thought, creating a keepsake that you can add to each Thanksgiving. Open to participants ages 9 and up.

Price: materials - \$5. Course Fee: \$15 adults, \$10 children.

Instructors: Mary Morningstar Collins, Melissa Leigh Ellis

Holiday Wreath-Making Workshop

December 3, 11 a.m. - 12:30 p.m.

Celebrate this joyful season by making a festive holiday wreath for your home! Learn about the rich symbolism of the plants we use at Christmastime while decorating a grapevine wreath, listening to carols, and sipping warm apple cider in a cozy setting. Materials such as silk flowers, greenery, and ribbon will be provided along with the wreath—feel free to bring any other treasures you would like to include to further personalize your creation. This indoor-outdoor wreath will brighten your holidays for years to come! Open to all participants ages 8 and up. Adult wreaths are approximately 18", children's wreaths are approximately 5".

Price: materials: \$12 adults, \$6 children. Course Fee: \$20 pre-registered, \$25 at the door (walk-ins responsible for bringing own wreath and decorating supplies).

Instructor: Mary Morningstar Collins

Mary Morningstar Collins holds a B.A. in Art History and an M. Phil. in the History of Art and Design. She relishes sharing her enthusiasm for art, history, and crafting through fun, informative workshops that highlight the charming individuality of the changing seasons.

Melissa Leigh Ellis holds a B.S. in Clinical Psychology, an M. A. in Counseling, and post-grad certificates in Expressive/Creative Arts Facilitation. Personal expression through art and crafting has been a lifelong passion of Melissa's that she now shares with others through her warm, approachable teaching style.

From the President



Dave Haupt

The Board of Trustees has decided to make this the final edition of Art News in keeping with our Green Initiative Program and the need to control our costs. Our full schedule of programs and events has been presented on our website: WatchungArts.org, for many years. It is the most current information available and it is updated continuously. We will be adjusting the format and adding new features in the coming months.

If you do not have access to the internet, please let us know and we will send you a printed copy of the website by U.S. Mail on a regular basis.

Please take note of the Member's and Children's Juried Art Shows taking place in December. This your opportunity to have personal input to our art programs. We are excited to be able to offer you, our members, the venue to display and express your love of art. After all, this is our mission and you are the foundation of the Arts Center.

You will soon be receiving a request for your continued support through our Annual Appeal. Your generosity is always appreciated and it is more important than ever in this period of economic downturn. I encourage you to extend your support and participation in our programs as we strive to not only maintain our past agenda but to also broaden our programs and events to celebrate the arts.

I would like to extend my Best Wishes for a Wonderful Holiday Season and a Happy New Year.

Have Skills? Donate Them to WAC!

The Watchung Arts Center, a volunteer-run organization, is looking for professionals to donate their skills in a variety of areas. If you are a plumber, electrician, locksmith, painter, data entry professional, corporate lawyer or can provide any expertise or services please contact the Center at 908-753-0190. As a 501(c)(3), donations in kind are tax deductible and would benefit the Center and the communities we serve.

Please Join and Support the Watchung Arts Center

Discover and experience the many happenings at the Watchung Arts Center by becoming a member today! Just fill out this form and mail it along with your check made payable to the Watchung Arts Center, 18 Stirling Road, Watchung, NJ

07069. You will receive member discounts on programs and performances, and VIP advance notice of special opportunities. Please take a moment to join the vibrant community of patrons, artists, and performers of the Watchung Arts Center.



"Love the Arts" Club Membership Categories:

- Contributor\$100+
- Sponsor.....\$250+
- Patron\$500+
- Benefactor\$1000+

General Membership Categories:

- Student (valid ID) \$10
- Senior Individual (62+)..... \$25
- Senior Couple (62+) \$35
- Individual \$35
- Family \$50

Name: _____

Address: _____

City, State, Zip: _____

Phone(s): _____

E-mail: _____

Please renew my membership.

My company may match my gift. I will enclose form.

Tell me more about volunteer opportunities.



Watchung Arts Center
18 Stirling Road
Watchung, NJ 07069
(908) 753-0190
www.WatchungArts.org
wacenter@optonline.net

Executive Director

Stacy Gannon

Board of Trustees

Dave Haupt, President
Marc D'Agosto
Ludmila Kalivoda
Florence Larkin
Jim Longo
Heinz Otto
Joan Plasner
Bindia Puri
Sean Quinn
Roger Seidel
Pamela Singh

Website/Newsletter

Ann Campbell

The Watchung Arts Council
is a 501(c)(3)
not-for-profit corporation.

Calendar – September-October 2011

Wednesday, November 2 – Saturday, November 26

Upper Gallery: New Jersey Photography Forum – 17th Annual Juried Photography Exhibit

Lower Gallery: Yeon Ji Yoo Park – In the Darkness (2011)

Sunday, November 6, 1 – 4 p.m., free of charge

Artist Reception: Upper and Lower Galleries

Friday, November 11, 8 p.m., \$16 advance sale, \$20 (members \$18, students \$10) at the door

JaZZ in the Gallery: The NFL Vocal Jazz Trio – Singing with Swing

Sunday, November 13, 1 – 4 p.m., \$8

Art Lecture: George Tice, professional fine art photographer and instructor

Saturday, November 19, 11 a.m., \$18, children \$13

Workshop: Caramel Apple Creations

Saturday, November 19, 1:30 p.m., \$15, children \$10

Workshop: Garland of Gratitude

Saturday, November 19, 8 p.m., \$8

Adult Improv: The Improvables

Sunday, November 20, 4 p.m., \$16 advance sale, \$20 (members \$18, students \$10) at the door

Classicals at the Circle: Stephen Fang and Jeanette Fang

Friday, December 2, 8 p.m., \$18 advance sale, \$22 (members \$20, students \$8) at the door

Contemporary Pop: Kemble and Ashe

Saturday, December 3, 11 a.m., \$20 pre-registered, \$25 at the door
Holiday Wreath-Making Workshop

Sunday, December 4 – Thursday, December 22

Upper Gallery: Curator Ludmila Kalivoda – 2011 Members Juried Art Show

Lower Gallery: Winner 2010 Members Juried Art Show – Maryann Ficker – Personal Realities

Sunday, December 4 – Friday, January 7

Studio: Curator Monica Schraiber Otero – 20th Children's Juried Art Show

Sunday, December 4, 12 noon – 1 p.m., free of charge

Children Artists Reception: Studio

Sunday, December 4, 1 – 4 p.m., free of charge

Member Artists Reception: Upper and Lower Galleries

Saturday, December 10, 8 p.m., \$8

Family Improv: The Improvables

Sunday, December 11, 4 p.m., \$12, students \$10

Classicals at the Circle: Rising Stars Benefit for WAC

Friday, December 16, 8 p.m., \$16 advance sale, \$20 (members \$18, students \$10) at the door

JaZZ in the Gallery Holiday Jazz: Marty Eigen's Beacon Hill Jazz Band

Address Service Requested

www.WatchingArts.org

The Cultural Center of Central New Jersey



On the Watching Circle
18 Stirling Road
Watching, NJ 07069

**Watching
Arts
Center**

Non-Profit Organization
U. S. Postage
PAID
Permit Number 726
Rahway, NJ 07065